

Department of Public Health
Barbara A. Garcia, MPA, Director of Health

San Francisco Health Network
Roland Pickens, MHA, FACHE, Director



Edwin M. Lee
Mayor

Laguna Honda Hospital and Rehabilitation Center
Mivic Hirose, RN, MS, CNS, Executive Administrator

February 9, 2017

Honorable Jane Kim
Committee Chair, Board of Supervisors

Honorable Aaron Peskin
Committee Vice Chair, Board of Supervisors

Honorable London Breed
President, Board of Supervisors

Government Audit and Oversight Committee
City Hall, Room 244
San Francisco, CA 94102

Dear Honorable Supervisors Kim, Peskin and Breed,

I am enclosing the quarterly report on behalf of Laguna Honda Hospital and Rehabilitation Center. This report is referred to by Resolution No. 200-05, File No. 050396.

The report details statistics data for Laguna Honda's admissions, age, ethnicity, and referral information.

I am available to answer any questions you may have. I can be reached at 759-2363. Thank you.

Sincerely,

A handwritten signature in cursive script that reads "Mivic Hirose".

Mivic Hirose
Executive Administrator
Laguna Honda Hospital and Rehabilitation Center

Attachments:

A. Sources of New SNF Admissions to Laguna Honda

- A-1 2016
- A-2 2015
- A-3 2014
- A-4 2013
- A-5 2012

B. Laguna Honda Distribution of Residents by Race

- B-1 12/31/16 and 12/31/15 Snapshot
- B-2 12/31/14 and 12/31/13 Snapshot
- B-3 12/31/12

C. Laguna Honda Gender Distribution 2012 to 2016

D. Laguna Honda Age Distribution 2012 to 2016

cc: Erica Major, Clerk of the Board
Barbara A. Garcia, Director of Health
Roland Pickens, Director of San Francisco Health Network

SOURCES OF NEW ADMISSIONS TO LAGUNA HONDA HOSPITAL *
JANUARY 2016 – DECEMBER 2016

		%		%		%		%		%		%		%		%		%		%		%		%		%		%
Source of Admission	Jan	SFGH	Feb	SFGH	Mar	SFGH	Apr	SFGH	May	SFGH	June	SFGH	July	SFGH	Aug	SFGH	Sept	SFGH	Oct	SFGH	Nov	SFGH	Dec	SFGH	Total	%		
Board and Care			1						1				1		1				1				1		6	1%		
Cal Pac Acute					1						2		3				2		1		2		2		13	3%		
Cal Pac SNF																							1		1	0%		
Chinese Hospital Acute															1										1	0%		
Chinese Hospital SNF																									0	0%		
Home	7		2		7		4		6		4		3		5		5		7		8		3		61	13%		
Home Health																									0	0%		
Kaiser Acute																									0	0%		
Kaiser SNF																									0	0%		
Mt. Zion Acute																									0	0%		
Other Misc					1		1		1								1		1				1		6	1%		
Other SNF									2		1				1		1		1				2		8	2%		
Seton Acute																									0	0%		
SFGH Acute	17	57%	25	53%	33	69%	22	52%	29	67%	24	65%	29	69%	30	64%	18	55%	16	44%	20	61%	23	61%	286	60%		
SFGH SNF	1	3%	8	17%		0%	1	2%		0%		0%		0%		0%		0%		0%		0%		0%	10	2%		
St. Francis Acute			2				3				5		1		1		1		2						15	3%		
St. Francis SNF																									0	0%		
St. Luke's Acute			1			1		1					1												4	1%		
St. Luke's SNF			2																						2	0%		
St. Mary's Acute	1		2		1								2				1		1				1		9	2%		
St. Mary's SNF																									0	0%		
Seton Acute																									0	0%		
Seton SNF																									0	0%		
UC Med Acute	4		4		5		10		2		1		2		8		4		5		3		4		52	11%		
UC Med SNF																									0	0%		
R.K. Davies Acute									1											1					2	0%		
VA Hospital Acute																									0	0%		
VA Hospital SNF																									0	0%		
TOTAL	30	60%	47	70%	48	69%	42	55%	43	67%	37	65%	42	69%	47	64%	33	55%	36	44%	33	61%	38	61%	476	100%		

*Effective 12/8/2010, all Laguna Honda Hospital residents were relocated to the new building and the total licensed bed capacity is 780.

SOURCES OF NEW ADMISSIONS TO LAGUNA HONDA HOSPITAL *
JANUARY 2015 – DECEMBER 2015

Source of Admission	Jan	%	Feb	%	Mar	%	Apr	%	May	%	June	%	July	%	Aug	%	Sept	%	Oct	%	Nov	%	Dec	%	Total	%
Board and Care	1		2		1								1		1		2		1		1				10	2%
Cal Pac Acute	3		1		2				1		2						1				1				11	2%
Cal Pac SNF			1		1																1				3	1%
Chinese Hospital Acute																									0	0%
Chinese Hospital SNF																									0	0%
Home	5		3		1		7		6		5		7		2		9		7		11		4		67	13%
Home Health																									0	0%
Kaiser Acute									1																1	0%
Kaiser SNF					1										1										2	0%
Mt. Zion Acute																									0	0%
Other Misc	2		2				2		1				1		1		2								11	2%
Other SNF	1		1		2				1		1		1		2		2		1		1				13	2%
Seton Acute																									0	0%
SFGH Acute	20	49%	23	49%	28	55%	37	67%	27	60%	26	52%	19	53%	23	59%	15	38%	19	48%	20	43%	22	61%	279	53%
SFGH SNF		0%	1	2%	2	4%		0%		0%	2	4%	1	3%	2	5%		0%		0%		0%		0%	8	2%
St. Francis Acute	1		2		2		1		1								1		2		2		1		13	2%
St. Francis SNF																									0	0%
St. Luke's Acute											1		1						2		1				5	1%
St. Luke's SNF			1						1		1				1										4	1%
St. Mary's Acute			3		4		3		2		5		1		2		2		2		2		1		27	5%
St. Mary's SNF																									0	0%
Seton Acute																									0	0%
Seton SNF																									0	0%
UC Med Acute	8		7		6		4		4		6		4		4		4		6		5		8		66	13%
UC Med SNF																									0	0%
VA Hospital Acute					1		1										1				1				4	1%
VA Hospital SNF											1														1	0%
TOTAL	41	49%	47	51%	51	59%	55	67%	45	60%	50	56%	36	56%	39	64%	39	38%	40	48%	46	43%	36	61%	525	100%

*Effective 12/8/2010, all Laguna Honda Hospital residents were relocated to the new building and the total licensed bed capacity is 780.

SOURCES OF NEW ADMISSIONS TO LAGUNA HONDA HOSPITAL *
JANUARY 2014 – DECEMBER 2014

		%		%		%		%		%		%		%		%		%		%		%		%		%		%
Source of Admission	Jan	SFGH	Feb	SFGH	Mar	SFGH	Apr	SFGH	May	SFGH	June	SFGH	July	SFGH	Aug	SFGH	Sept	SFGH	Oct	SFGH	Nov	SFGH	Dec	SFGH	Total	%		
Board and Care	1				1		1		1				1		2				2				1		10	2%		
Cal Pac Acute			1						2		2		2		1		3		2		1				14	3%		
Cal Pac SNF					2				1						1		2		1		1				8	1%		
Chinese Hospital Acute	1																								1	0%		
Chinese Hospital SNF																									0	0%		
Home	3		3		7		3		9		7		2		2		4		5		1		3		49	9%		
Home Health																									0	0%		
Kaiser Acute																									0	0%		
Kaiser SNF																									0	0%		
Mt. Zion Acute	1		3		2		4		1				1		1										13	2%		
Other Misc			1		2		2		2		1						1								9	2%		
Other SNF			2		2		1		3		1		2		3								1		15	3%		
Seton Acute																	1								1	0%		
SFGH Acute	27	73%	18	49%	24	51%	32	67%	32	56%	33	67%	29	57%	27	59%	31	66%	33	69%	20	61%	37	76%	343	62%		
SFGH SNF	1	3%	3	8%	2	4%	3	6%		0%	2	4%	1	2%	2	4%		0%		0%	2	6%	1	2%	17	3%		
St. Francis Acute			2						1				3				1		2		2		3		14	3%		
St. Francis SNF																									0	0%		
St. Luke's Acute									1				3												4	1%		
St. Luke's SNF					1																2				3	1%		
St. Mary's Acute	1		1		1						1		3		2		1		1				2		13	2%		
St. Mary's SNF			1										1												2	0%		
Seton Acute																									0	0%		
Seton SNF																									0	0%		
UC Med Acute	2		2		3		2		4		2		3		5		3		2		4		1		33	6%		
UC Med SNF																									0	0%		
VA Hospital Acute																									0	0%		
VA Hospital SNF																									0	0%		
TOTAL	37	76%	37	57%	47	55%	48	73%	57	56%	49	71%	51	59%	46	63%	47	66%	48	69%	33	67%	49	78%	549	100%		

*Effective 12/8/2010, all Laguna Honda Hospital residents were relocated to the new building and the total licensed bed capacity is 780.

SOURCES OF NEW ADMISSIONS TO LAGUNA HONDA HOSPITAL *
JANUARY 2013 – DECEMBER 2013

		%		%		%		%		%		%		%		%		%		%		%		%		%		%
Source of Admission	Jan	SFGH	Feb	SFGH	Mar	SFGH	Apr	SFGH	May	SFGH	June	SFGH	July	SFGH	Aug	SFGH	Sept	SFGH	Oct	SFGH	Nov	SFGH	Dec	SFGH	Total	%		
Board and Care	1		1						1																3	1%		
Cal Pac Acute			3		1				1		2		2						1		1				11	2%		
Cal Pac SNF									1										1		1		1		4	1%		
Chinese Hospital Acute																									0	0%		
Chinese Hospital SNF																									0	0%		
Home	5		4		7		8		6		3		6		8		3		4		3		2		59	13%		
Home Health									1												1		3		5	1%		
Kaiser Acute																									0	0%		
Kaiser SNF																									0	0%		
Mt. Zion Acute			1		1		2																		4	1%		
Other Misc							1				5								2						8	2%		
Other SNF	1				1				1				1								5		4		13	3%		
Seton Acute																									0	0%		
SFGH Acute	28	76%	32	68%	19	59%	32	70%	25	60%	21	58%	26	59%	17	61%	21	70%	19	59%	19	59%	23	50%	282	62%		
SFGH SNF	1	3%		0%		0%	1	2%		0%	2	6%	8	18%	1	4%	2	7%		0%		0%	4	9%	19	4%		
St. Francis Acute			1				1		1								2								5	1%		
St. Francis SNF																									0	0%		
St. Luke's Acute			2																				2		4	1%		
St. Luke's SNF																					1				1	0%		
St. Mary's Acute	1		1		1		1		1		2		1		1										9	2%		
St. Mary's SNF																									0	0%		
Seton Acute																									0	0%		
Seton SNF																									0	0%		
UC Med Acute			2		2				4		1				1		2		4		1		5		22	5%		
UC Med SNF																									0	0%		
VA Hospital Acute																			1						1	0%		
VA Hospital SNF																						2			2	0%		
TOTAL	37	78%	47	68%	32	59%	46	72%	42	60%	36	64%	44	77%	28	64%	30	77%	32	59%	32	59%	46	59%	452	100%		

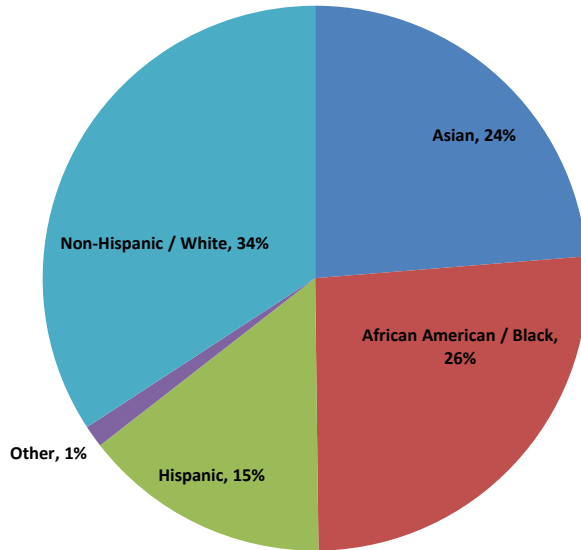
*Effective 12/8/2010, all Laguna Honda Hospital residents were relocated to the new building and the total licensed bed capacity is 780.

SOURCES OF NEW ADMISSIONS TO LAGUNA HONDA HOSPITAL *
JANUARY 2012 – DECEMBER 2012

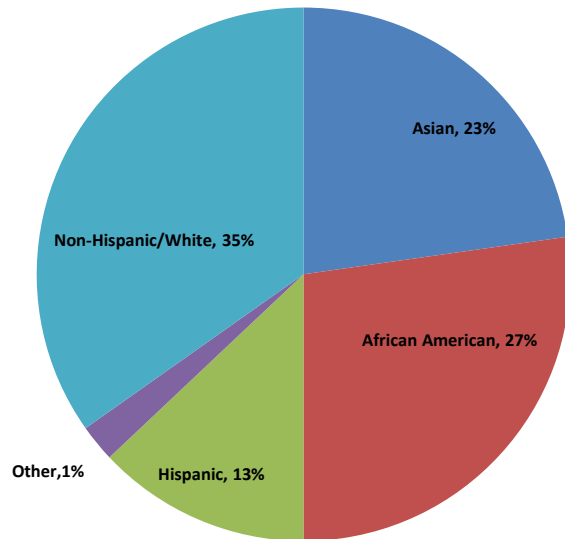
Source of Admission	Jan	%	Feb	%	Mar	%	Apr	%	May	%	June	%	July	%	Aug	%	Sept	%	Oct	%	Nov	%	Dec	%	Total	%
Board and Care					1		2												1				1		5	1%
Cal Pac Acute	5		2		2		4		2		2		2		3		1		2		3		2		30	7%
Cal Pac SNF																					1				1	0%
Chinese Hospital Acute																	1								1	0%
Chinese Hospital SNF																									0	0%
Home	2		2		4		3		2		3		8		4		4		4		5		9		50	12%
Home Health																									0	0%
Kaiser Acute	1																						1		2	0%
Kaiser SNF																									0	0%
Mt. Zion Acute			1				1		1		3						2		3						11	3%
Other Misc							1		1														2		4	1%
Other SNF			1		1		1																		3	1%
Seton Acute																									0	0%
SFGH Acute	14	44%	12	50%	25	60%	23	56%	26	70%	22	69%	24	63%	14	50%	20	61%	25	63%	22	59%	24	55%	251	59%
SFGH SNF		0%		0%	2	5%		0%	1	3%		0%		0%	5	18%		0%	1	3%		0%		0%	9	2%
St. Francis Acute	1		2		1		2		1		1		2		1		1						2		14	3%
St. Francis SNF																									0	0%
St. Luke's Acute	1				1								1								2				5	1%
St. Luke's SNF																									0	0%
St. Mary's Acute	3				2		1		2		1						1		3		1		1		15	4%
St. Mary's SNF	1																								1	0%
Seton Acute																									0	0%
Seton SNF																									0	0%
UC Med Acute	4		3		3		3		1				1		1		2		1		3		2		24	6%
UC Med SNF																									0	0%
VA Hospital Acute			1														1								2	0%
VA Hospital SNF																									0	0%
TOTAL	32	44%	24	50%	42	64%	41	56%	37	73%	32	69%	38	63%	28	68%	33	61%	40	65%	37	59%	44	55%	428	100%

*Effective 12/8/2010, all Laguna Honda Hospital residents were relocated to the new building and the total licensed bed capacity is 780.

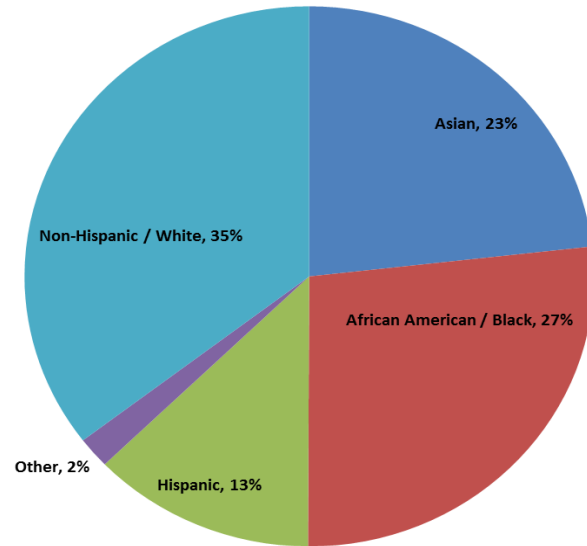
Laguna Honda Hospital Distribution of Residents by Race as of 12/31/2016
(n = 763)



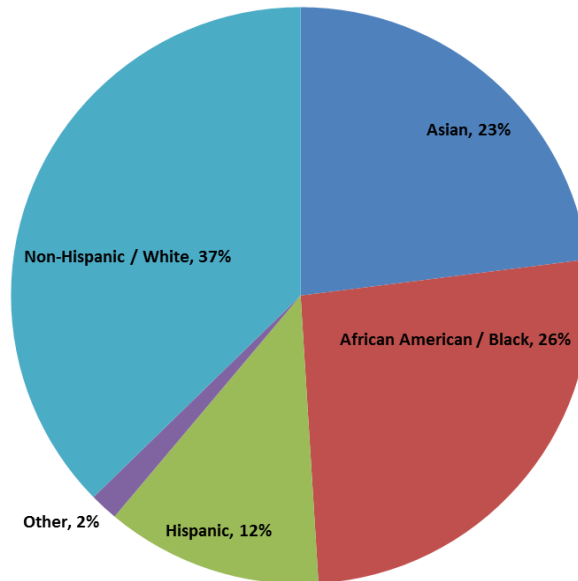
Laguna Honda Hospital Distribution of Residents by Race as of 12/31/2015
(n = 756)



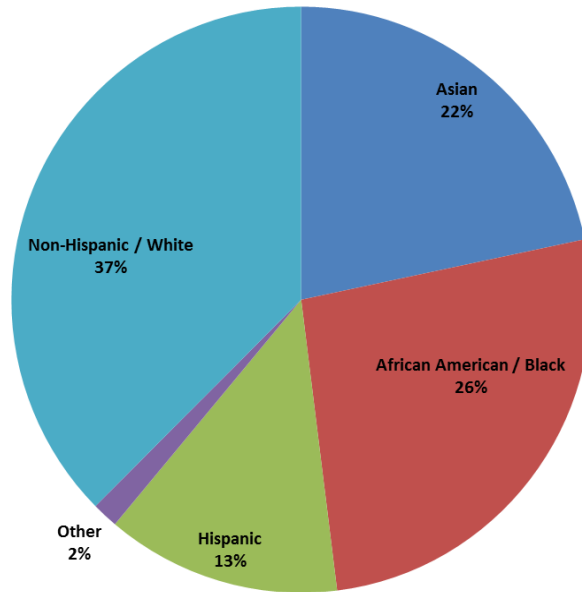
Laguna Honda Hospital Distribution of Residents by Race as of 12/31/2014
(n = 749)



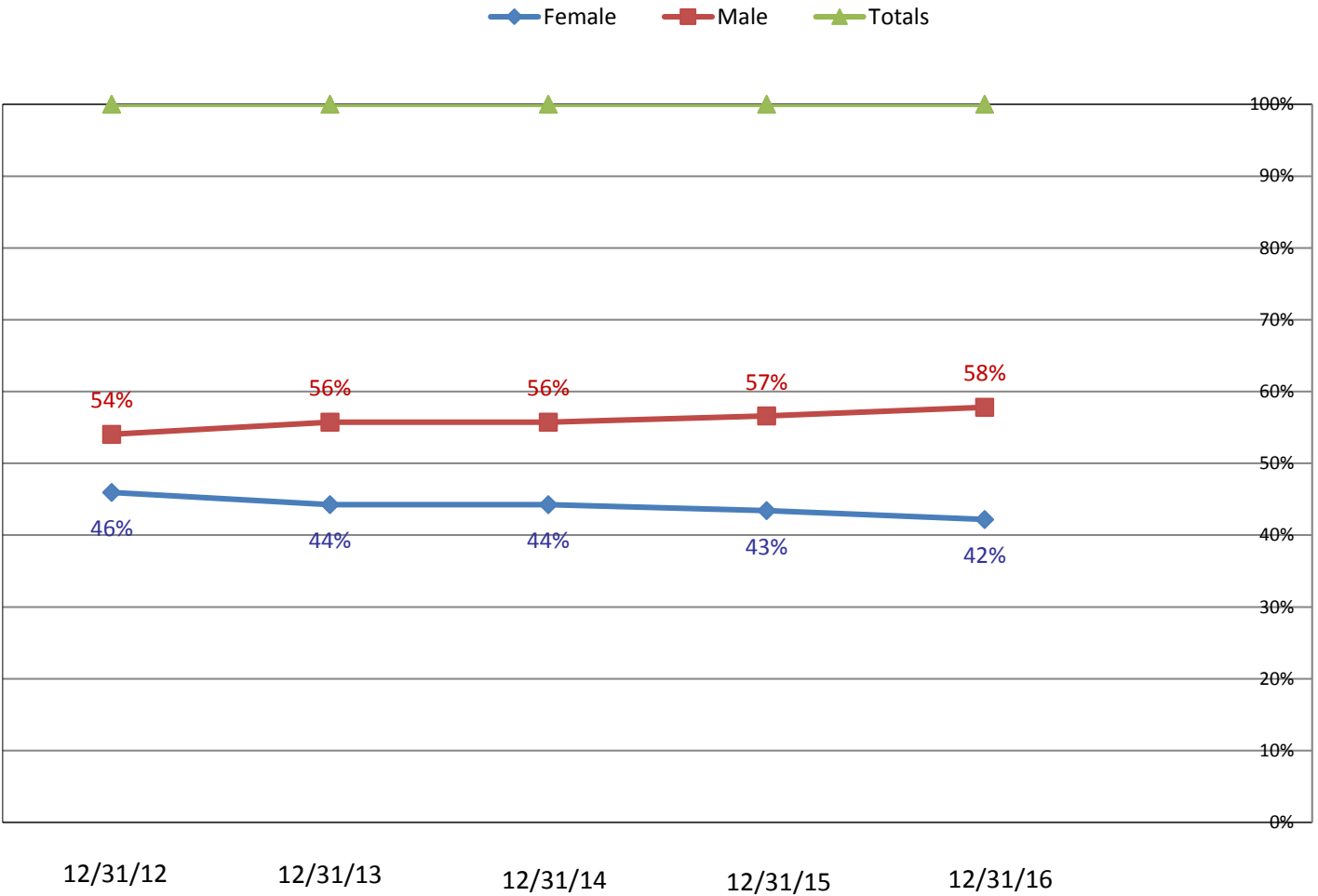
Laguna Honda Hospital Distribution of Residents by Race as of 12/31/2013
(n = 761)



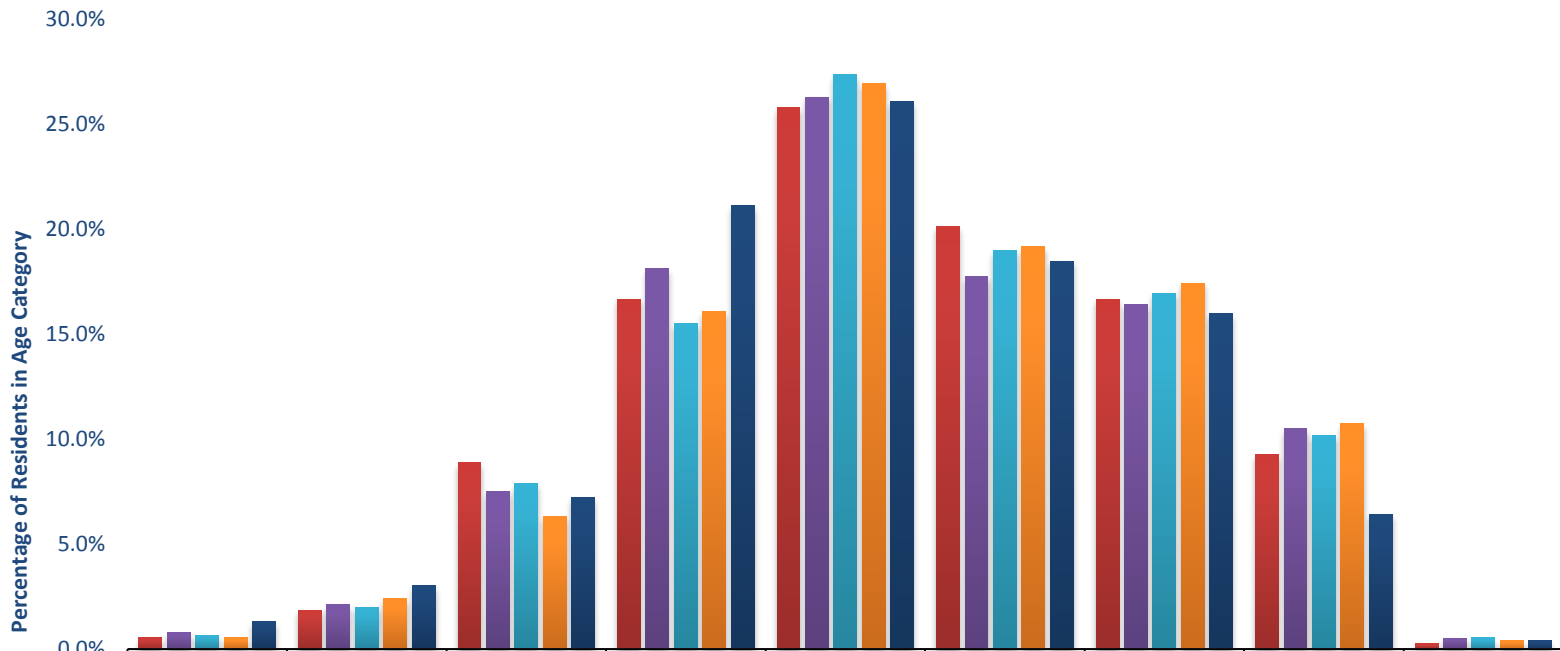
Laguna Honda Hospital Distribution of Residents by Race as of 12/31/2012
(n = 756)



**Laguna Honda Hospital
Gender Distribution of Residents
2012 – 2016**



Laguna Honda Hospital Age Distribution of Residents 2012 – 2016



	<30	30-39	40-49	50-59	60-69	70-79	80-89	90-99	>99
Calendar 2012	0.5%	1.9%	8.9%	16.7%	25.8%	20.1%	16.7%	9.3%	0.3%
Calendar 2013	0.8%	2.1%	7.5%	18.1%	26.3%	17.7%	16.4%	10.5%	0.5%
Calendar 2014	0.7%	2.0%	7.9%	15.5%	27.4%	19.0%	17.0%	10.1%	0.5%
Calendar 2015	0.5%	2.4%	6.3%	16.1%	26.9%	19.2%	17.4%	10.7%	0.4%
Calendar 2016	1.3%	3.0%	7.2%	21.1%	26.1%	18.5%	16.0%	6.4%	0.4%